



Filtration Specialist

# ZERO HOLD UP

Horizontal Plate Closed Pressure Filter

With 99.99% Single Pass Clarity





**Excellence &  
innovation built  
into every design.**









## ABOUT US

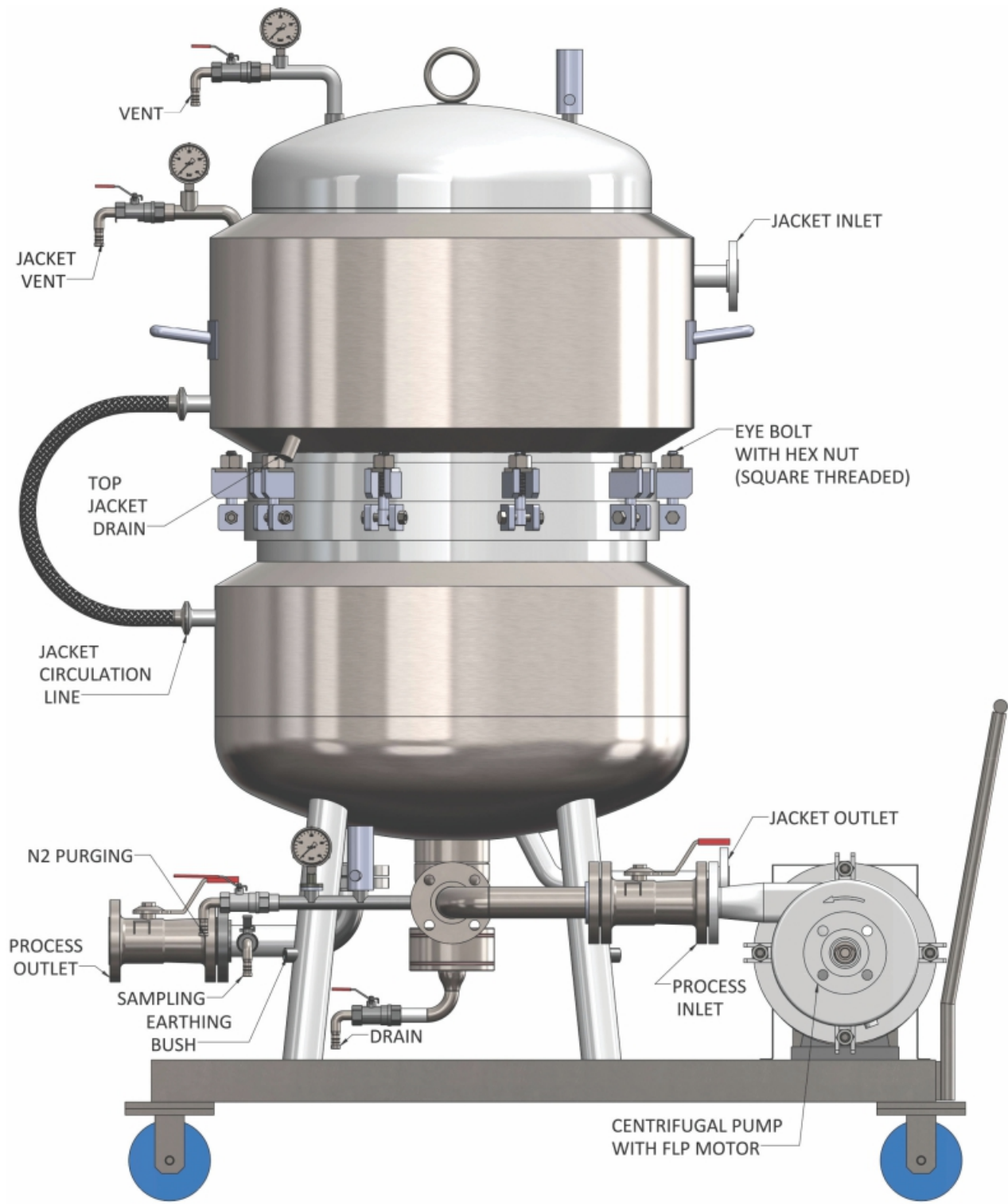
Sawant Filtech Pvt. Ltd., a group company of Subodh Engineering is an innovative engineering and manufacturing company specialising in solid / liquid filtration technology.

Sawant Filtech invented a new generation zero hold up filter and thus, began paving its way to become pioneers in the filtration industry. With 30 years of expertise, the company has invented a variety of products, striving for innovation and efficiency, offering product support much beyond the industry standard.

We work closely with our clients to identify the most effective and efficient solution to their filtration needs. Our years of experience in the field of solid-liquid separation and our innovative ideas as technology leader enable us to find a tailor-made filtration solution in an application-suitable quality in shortest time.

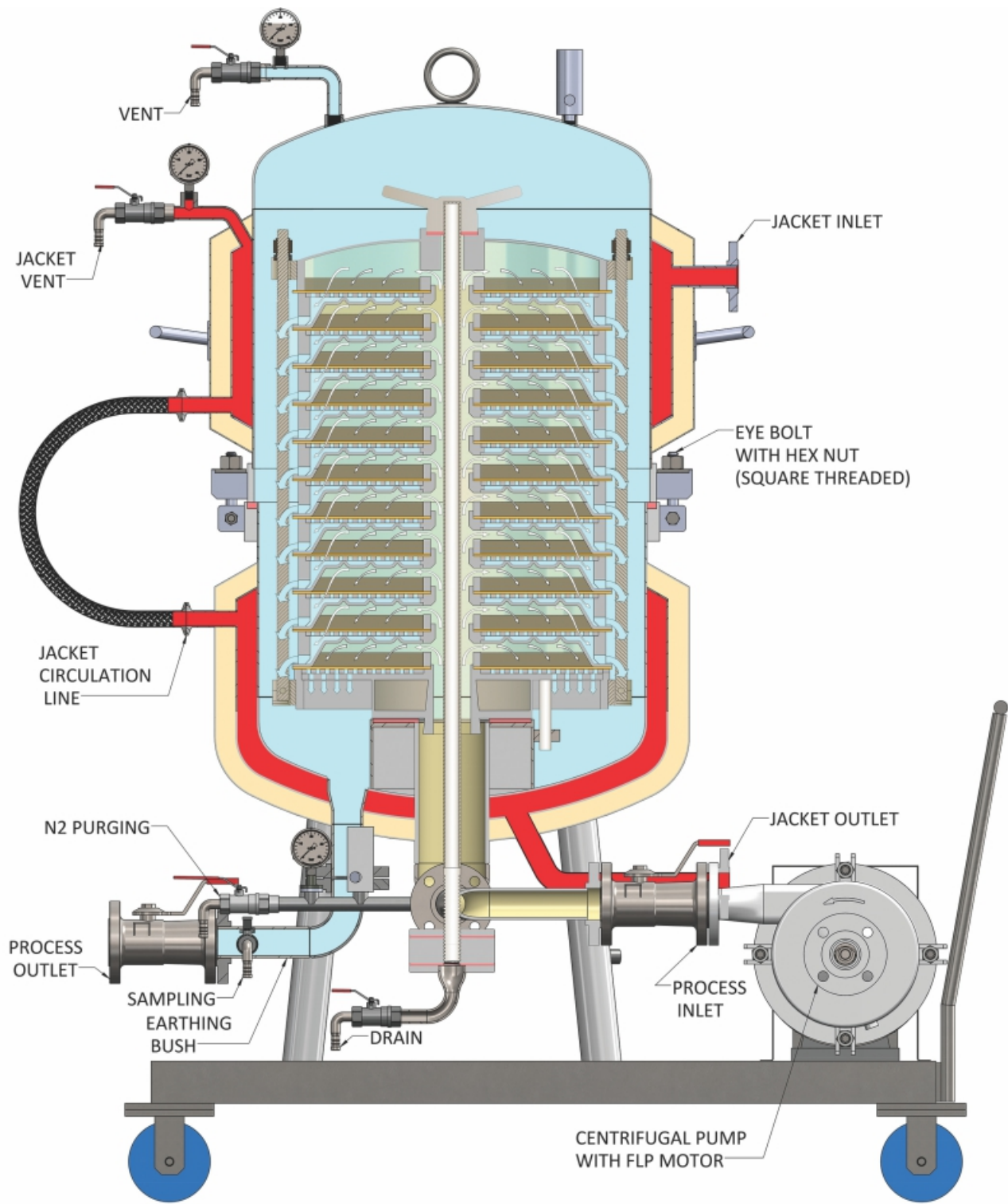
As we attach great importance to efficiency, you can be sure that our products work cost-effectively, profitably.





**ZERO HOLD UP HORIZONTAL PLATE CLOSED PRESSURE FILTER**



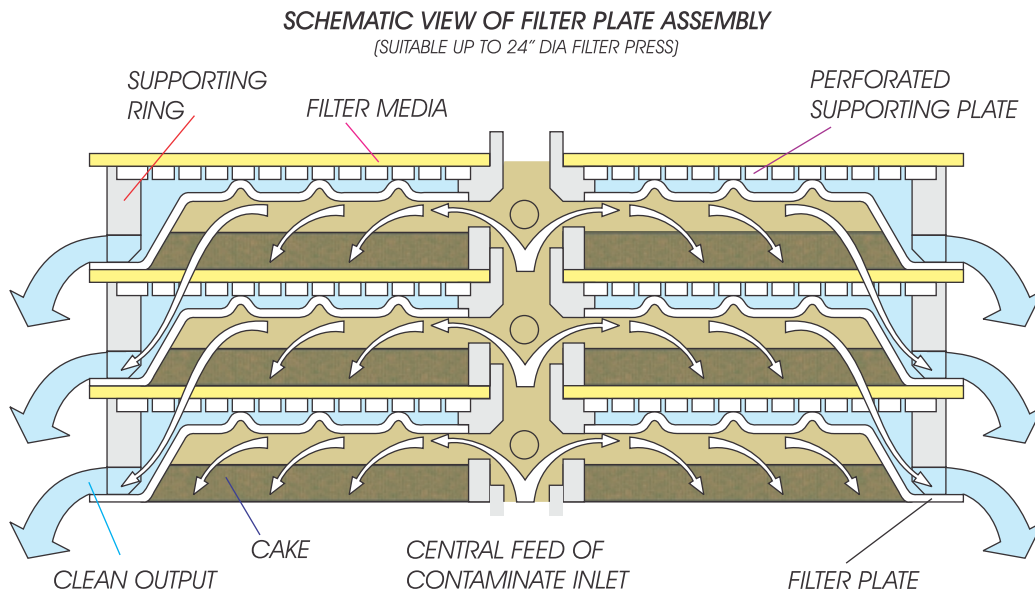




# WORKING PRINCIPLE

The plate pack assembly consists of plates with interlocking cups, plate rings, perforated screens and filter media. Interlocking cups are arranged above one another, forming a single pipeline. The unfiltered liquid is centrally fed under pressure from bottom inlet. The liquid spreads out equally on each plate fitted with filter media.

Solids remain on the filter media and clear filtrate flows through gaps on the supporting ring and collects in the shell which is led out through a pipeline in process solids are evenly distributed on each plate. At the end of the cycle the cake can be dried maximum by applying air or inert gas.



## APPLICATION

- Pharmaceuticals
- Fine Chemicals
- Agro Chemical
- Resins
- Paint
- Food Industries
- Bio Industries

## MOC

- SS316
- SS316L
- SS304
- SS904L
- Hastelloy C276 / C22
- Polypropylene
- PPH
- P.V.D.F.
- PFA
- PTFE



# FEATURES

- 99% Single pass clarity with no solid particles, subject to correct filter media.
- Full batch recovery, no separate scavenging system needed.
- Proper sealing which allows the filtration of volatile, toxic and inflammable products.

## **CENTRAL FEEDING ENSURES:**

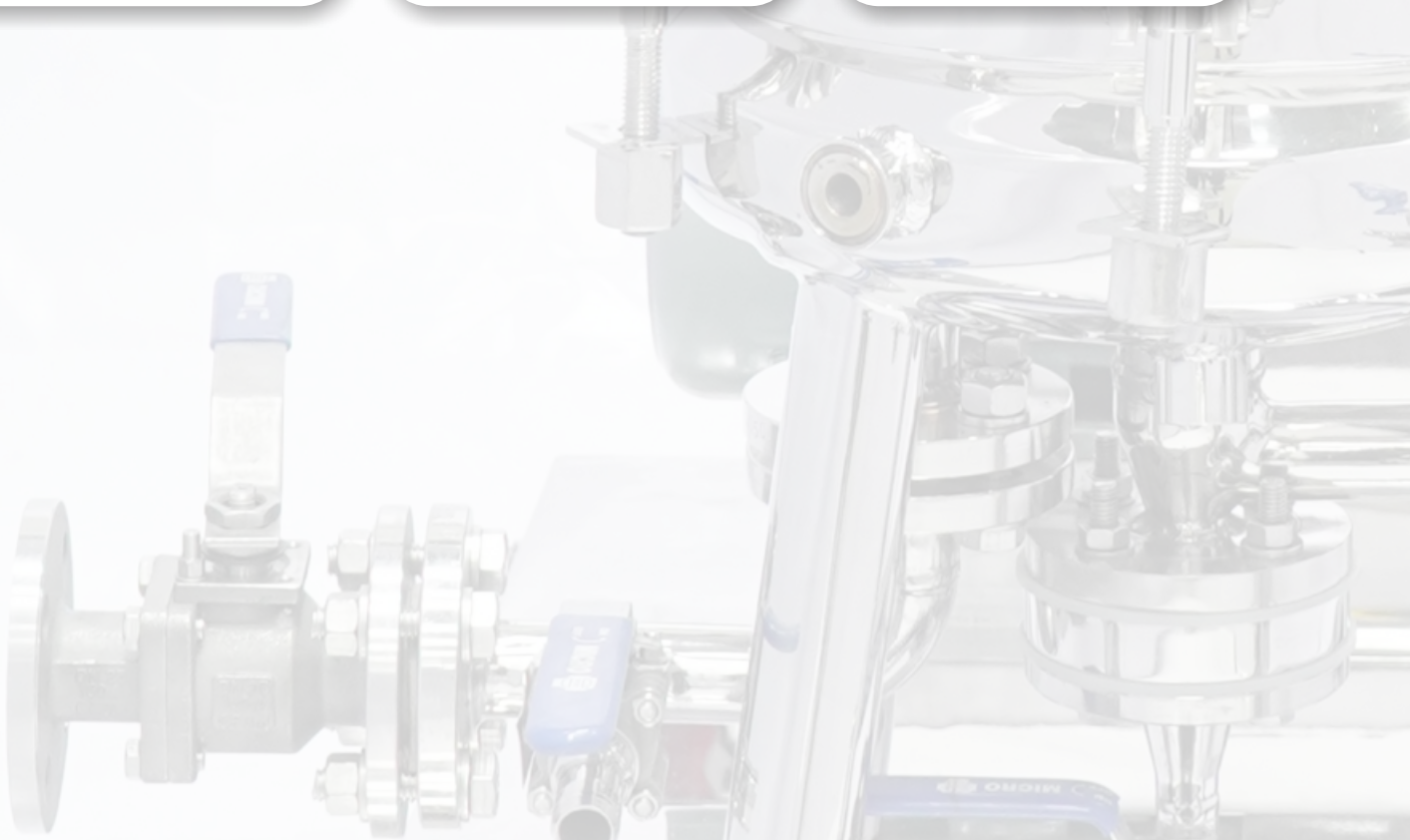
- Complete trapping of solids inside the cartridge assembly.
- Complete recovery of liquids.
- Solids can be maximum dried with N2.
- Complete cake gets retained over the plate with uniform distribution on each plate.
- Uniform filter-aid bed can be formed.

## **CLOSED SYSTEM ENSURES:**

- Filtration of toxic, hazardous, explosive materials.
- Efficient cleaning and sterilization.

## **PLATE PACK ARRANGEMENT ENSURES:**

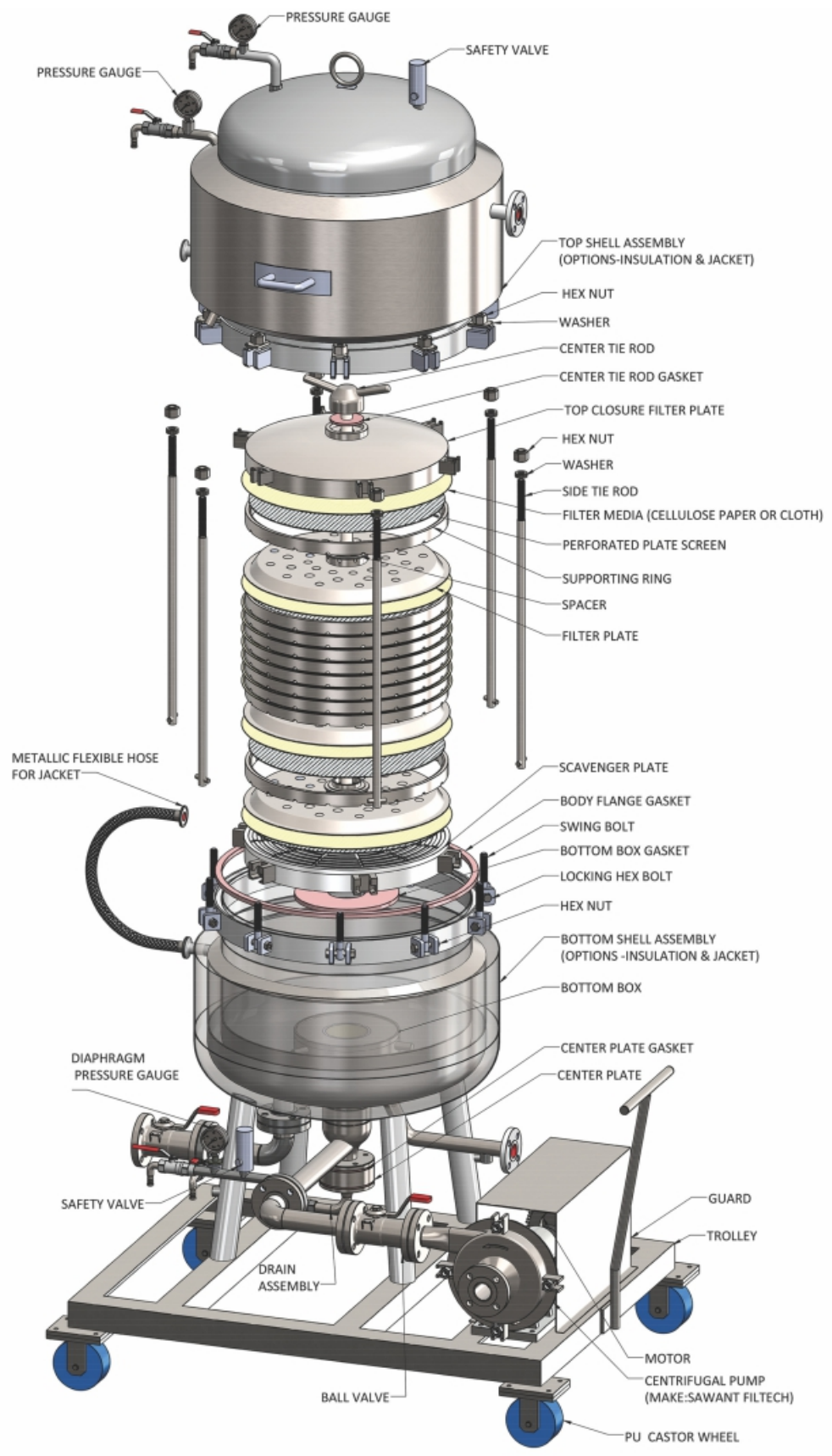
- Any type of filtering media singularly or in combination, can be used to achieve required micron efficiency.
- Easy removal and cleaning of the cartridge assembly.





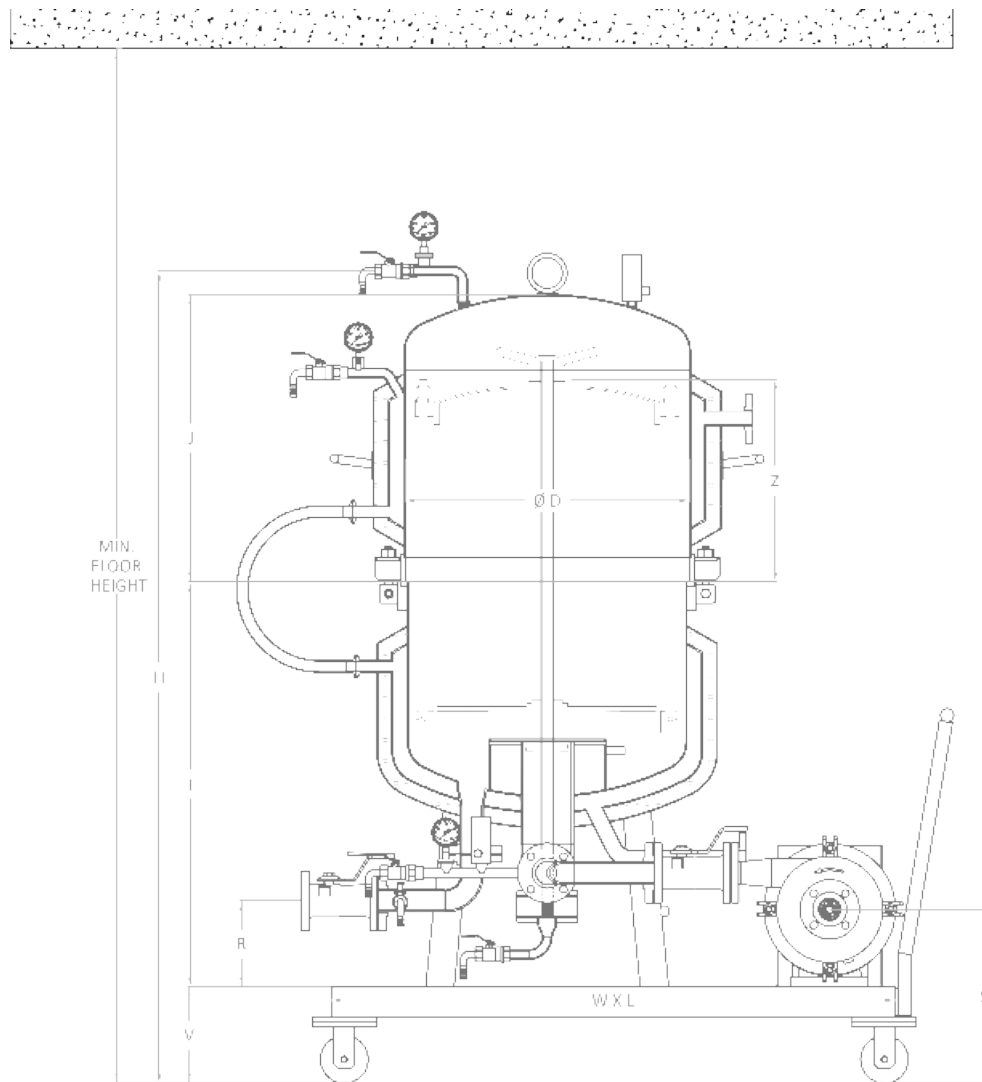
# TECHNICAL SPECIFICATIONS

Model No.	Dia of Plate	No. of Plates	Filtration Area In M2	Cake Holding Capacity		Flow Rate Ltr. / Hr.	Size of Pump	H.P of Motor	Dry Carbon
				Maximum In Ltr	Functional In Ltr				
SFZH 8/3	8"	3	0.132	2.68	1.88	267	1" ASA 150	1 H.P	0.66 Kg
SFZH 8/6	8"	6	0.231	4.69	3.29	467	1" ASA 150	1 H.P	1.15 Kg
SFZH 8/8	8"	8	0.297	6.03	4.23	600	1" ASA 150	1 H.P	1.49 Kg
SFZH 8/10	8"	10	0.363	7.37	5.17	734	1" ASA 150	1 H.P	1.82 Kg
SFZH 14/4	14"	4	0.495	14.1	11.35	1000	1" ASA 150	2 H.P	2.48 Kg
SFZH 14/6	14"	6	0.692	19.74	15.89	1400	1" ASA 150	2 H.P	3.46 Kg
SFZH 14/8	14"	8	0.89	25.38	20.43	1800	1" ASA 150	2 H.P	4.45 Kg
SFZH 14/10	14"	10	1.088	31.02	24.97	2200	1" ASA 150	2 H.P	5 Kg
SFZH 14/12	14"	12	1.286	36.66	29.51	2600	1" ASA 150	2 H.P	6.43 Kg
SFZH 18/4 S	18"	4	0.822	18.1	12.55	1660	1 1/2" ASA 150	3 H.P	4.11 Kg
SFZH 18/8 S	18"	8	1.481	32.58	22.59	2995	1 1/2" ASA 150	3 H.P	7.40 Kg
SFZH 18/10 S	18"	10	1.81	39.82	27.61	3660	1 1/2" ASA 150	3 H.P	9.05 Kg
SFZH 18/12 S	18"	12	2.139	47.06	32.63	4325	1 1/2" ASA 150	3 H.P	10.70 Kg
SFZH 18/15 S	18"	15	2.632	57.92	40.16	5323	1 1/2" ASA 150	3 H.P	13.16 Kg
SFZH 18/18 S	18"	18	3.126	68.78	47.69	6322	1 1/2" ASA 150	3 H.P	15.63 Kg
SFZH 18/20 S	18"	20	3.455	76.02	52.71	6988	1 1/2" ASA 150	3 H.P	17.28 Kg
SFZH 18/23 S	18"	23	3.948	86.88	60.24	7985	1 1/2" ASA 150	3 H.P	19.74 Kg
SFZH 18/4 D	18"	4	0.822	26.8	21.4	1660	1 1/2" ASA 150	3 H.P	4.11 Kg
SFZH 18/8 D	18"	8	1.481	48.24	38.52	2995	1 1/2" ASA 150	3 H.P	7.40 Kg
SFZH 18/10 D	18"	10	1.81	58.96	47.08	3660	1 1/2" ASA 150	3 H.P	9.05 Kg
SFZH 18/12 D	18"	12	2.139	69.68	55.64	4325	1 1/2" ASA 150	3 H.P	10.70 Kg
SFZH 18/15 D	18"	15	2.632	85.76	68.48	5323	1 1/2" ASA 150	3 H.P	13.16 Kg
SFZH 18/18 D	18"	18	3.126	101.84	81.32	6322	1 1/2" ASA 150	3 H.P	15.63 Kg
SFZH 18/20 D	18"	20	3.455	112.56	89.88	6988	1 1/2" ASA 150	3 H.P	17.28 Kg
SFZH 18/23 D	18"	23	3.948	128.64	102.72	7985	1 1/2" ASA 150	3 H.P	19.74 Kg
SFZH 20/4 D	20"	4	1.025	29.4	22	2073	1 1/2" ASA 150	3 H.P	5.12 Kg
SFZH 20/8 D	20"	8	1.845	52.92	39.6	3731	1 1/2" ASA 150	3 H.P	9.23 Kg
SFZH 20/10 D	20"	10	2.255	64.68	48.4	4560	1 1/2" ASA 150	3 H.P	11.28 Kg
SFZH 20/12 D	20"	12	2.665	76.44	57.2	5390	1 1/2" ASA 150	3 H.P	13.33 Kg
SFZH 20/15 D	20"	15	3.28	94.08	70.4	6635	1 1/2" ASA 150	3 H.P	16.40 Kg
SFZH 20/18 D	20"	18	3.895	111.72	83.6	7877	1 1/2" ASA 150	3 H.P	19.48 Kg
SFZH 20/20 D	20"	20	4.305	123.48	92.4	8707	1 1/2" ASA 150	5 H.P	21.53 Kg
SFZH 20/23 D	20"	23	4.92	141.12	105.6	9950	1 1/2" ASA 150	5 H.P	24.60 Kg
SFZH 24/10 S	24"	10	2.992	68.75	44.22	6051	2" ASA 150	3 H.P	14.96 Kg
SFZH 24/12 S	24"	12	3.536	81.25	52.26	7151	2" ASA 150	3 H.P	17.68 Kg
SFZH 24/15 S	24"	15	4.352	100	64.32	8801	2" ASA 150	5 H.P	21.76 Kg
SFZH 24/18 S	24"	18	5.168	118.75	76.38	10452	2" ASA 150	5 H.P	25.84 Kg
SFZH 24/20 S	24"	20	5.712	131.25	84.42	11552	2" ASA 150	5 H.P	28.56 Kg
SFZH 24/23 S	24"	23	6.528	150	96.48	13203	2" ASA 150	5 H.P	32.64 Kg
SFZH 24/10 D	24"	10	2.992	103.07	71.17	6051	2" ASA 150	5 H.P	14.96 Kg
SFZH 24/12 D	24"	12	3.536	121.81	84.11	7151	2" ASA 150	5 H.P	17.68 Kg
SFZH 24/15 D	24"	15	4.352	149.92	103.52	8801	2" ASA 150	5 H.P	21.76 Kg
SFZH 24/18 D	24"	18	5.168	178.03	122.93	10452	2" ASA 150	5 H.P	25.84 Kg
SFZH 24/20 D	24"	20	5.712	196.77	135.87	11552	2" ASA 150	5 H.P	28.56 Kg
SFZH 24/23 D	24"	23	6.528	224.88	155.28	13203	2" ASA 150	5 H.P	32.64 Kg
SFZH 33/7 S	33"	7	4.4	103.76	63.28	8899	3" ASA 150	7.5 H.P	22.00 Kg
SFZH 33/10 S	33"	10	6.05	142.67	87.01	12236	3" ASA 150	7.5 H.P	30.25 Kg
SFZH 33/14 S	33"	14	8.25	194.55	118.65	16685	3" ASA 150	7.5 H.P	41.25 Kg
SFZH 33/18 S	33"	18	10.45	246.43	150.29	21135	3" ASA 150	7.5 H.P	52.25 Kg
SFZH 33/20 S	33"	20	11.55	272.37	166.11	23360	3" ASA 150	7.5 H.P	57.75 Kg



**Exploded View**





JACKET & INSULATION IS OPTIONAL. ALL DIMENSIONS IN MM

DIMENSIONS ( JACKETED ZERO HOLD UP)									
MODEL NO	SFZH 8/10	SFZH 14/10	SFZH 18/15 S	SFZH 18/15 D	SFZH 20/15 D	SFZH 24/20 S	SFZH 24/20 D	SFZH 33/14 S	SFZH 33/14D
ØD	310	512	605	605	605	765	765	1038	1038
H	1195	1568	1633	1808	1808	1970	2210	1765	1880
I	410	700	755	755	755	830	830	1045	1045
J	460	540	550	725	725	770	1010	600	715
S	350	368	368	368	368	368	368	390	390
R	105	140	115	115	115	115	115	190	190
Z	350	365	350	530	530	475	715	312	425
V	205	205	205	205	205	285	285	N/A	N/A
CENTER TIE ROD HEIGHT	680	1000	1050	1225	1225	1210	1455	1285	1400
SINGLE FILTER PLATE ASSEMBLY HEIGHT	33	45	33	45	45	33	45	37	45
VESSEL EMPTY VOLUME WITHOUT FILTER PLATE ASSEMBLY, LTR	41	166	245	300	300	494	603	812	950
MIN. FLOOR HEIGHT	1745	2370	2460	2815	2815	2900	3385	2742	2970
W X L	650 X 750	750 X 850	850 X 950	850 X 950	850 X 950	1000 X 1100	1000 X 1100	N/A	N/A
MIN. FLOOR SPACE	1200 X 1200	1500 X 1500	1800 X 1800	1800 X 1800	1800 X 1800	2300 X 2300	2300 X 2300	2500 X 2500	2500 X 2500

SAWANT FILTECH RESERVES THE RIGHT TO CHANGE DIMENSIONS WITHOUT NOTICE.

# WHY SAWANT FILTECH?

We at Sawant Filtech have our Research & Development department, where existing filtration and manufacturing methods are further refined and improved. Added to that is our engineer's expertise in designing custom-made solution.

Global development within the industry are rapid, environmental protection is a major pre-occupation, and stricter filtration requirement are being introduced almost daily. The provision of quick & effective solutions is a challenge Sawant Filtech is happy to meet.

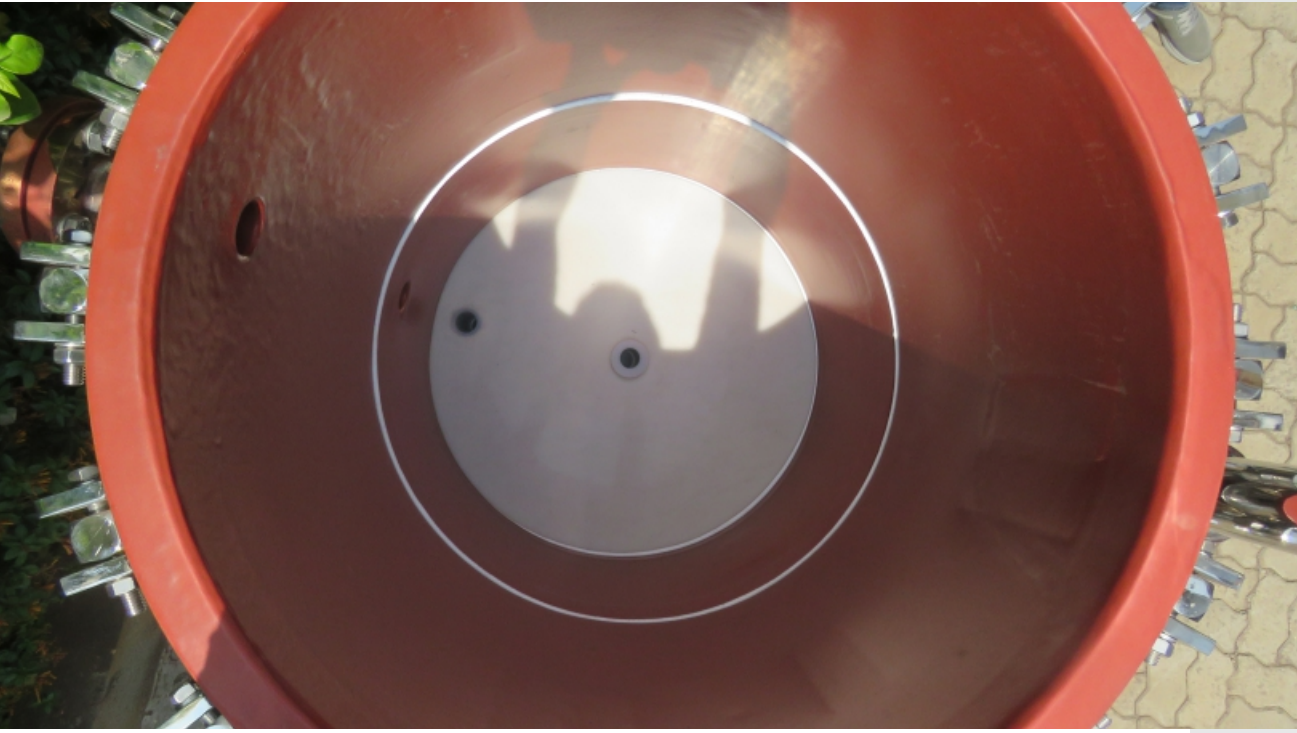




# POLYPROPYLENE / PTFE / PVDF ZERO HOLD UP FILTERS FOR CORROSIVE APPLICATIONS

We offer technology and expertise to find the product most suitable for your requirements.

We aim to offer quick, reliable and economic solutions for all your filtration needs.





Model No. SFZH-SSPFA 18/20 D



PFA Lined Zero Hold Up Filter





# FILTER MEDIA

We offer a wide range of filter media in Textile Cloth, Cellulose Paper and Carbon Pads.

Our technical team will help you in choosing the right type of filter media according to your process parameters.



# CONTACT US



## Sawant Filtech Pvt. Ltd.

### Corporate Office:

102/103, Ram Ashirwad Industrial Estate,  
Building No. 2, Ram Mandir Road,  
Goregaon (W), Mumbai - 400104,  
Maharashtra, India

Tel: (+91 22) 67251786 / 26764171

### Vadodara Office:

319, 320, Park Paradise Vadsar,  
Kalali Ring Road, Near Billa Bong School,  
Vadodara - 390010, Gujarat, India

Tel: +91 265 - 2984546

### Hyderabad Office:

Flat No. 001, 1st Floor,  
Raghavendra Residency, Vijay Nagar Colony,  
Picket, Secunderabad, Hyderabad - 500009,  
India

---

**Manufacturing Unit 1:** Plot No. D-18, MIDC, Ambad, Nashik- 422010, Maharashtra, India

**Manufacturing Unit 2:** Plot No. A-314, Road No. 34, Wagle Estate, Thane-400604, Maharashtra, India